

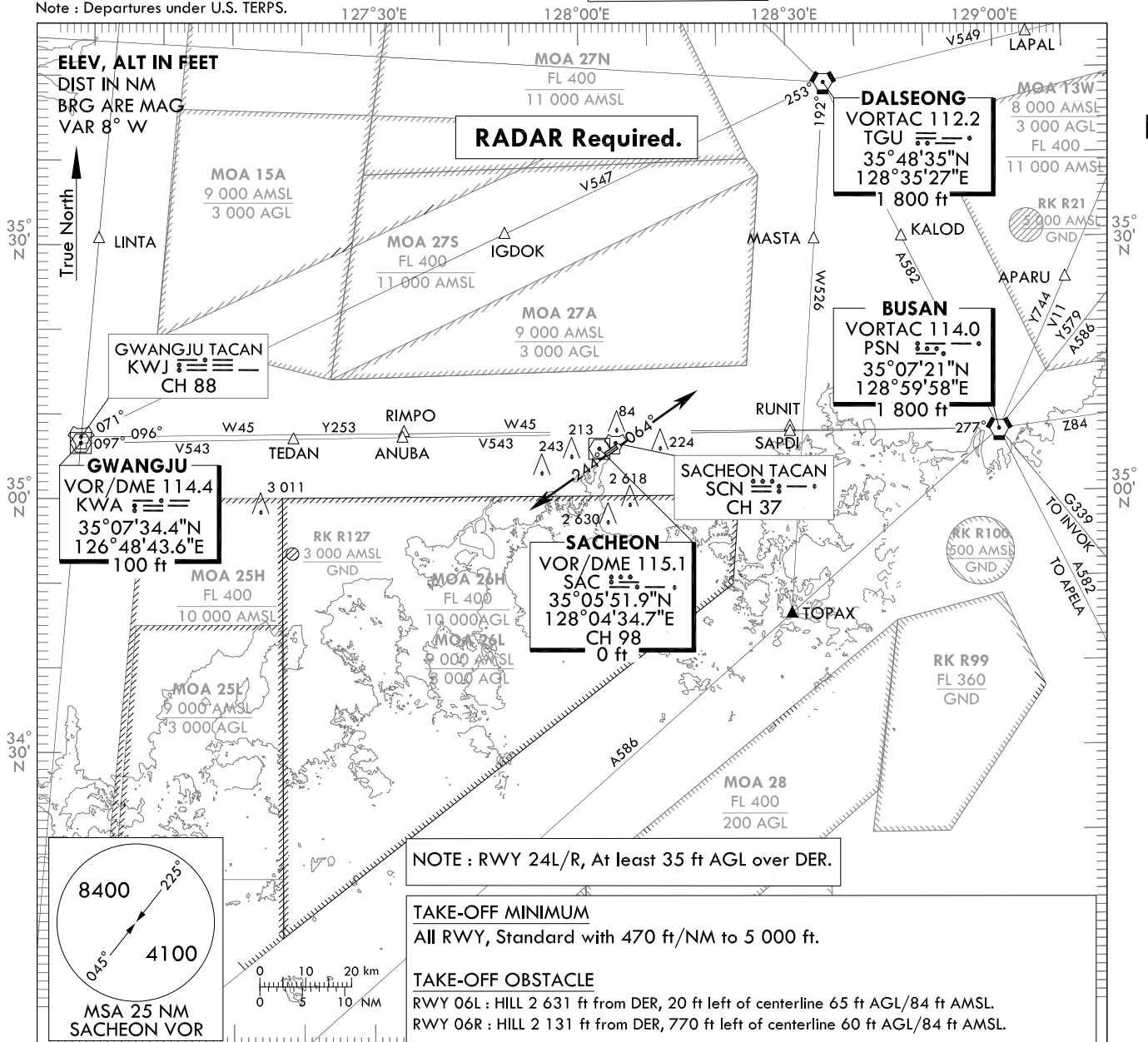
**STANDARD DEPARTURE  
CHART - INSTRUMENT(SID)**

TRANSITION ALT 14 000  
TRANSITION LVL FL 140

SACHEON DEP 135.4  
347.3  
SACHEON TWR 118.675  
236.6

**SACHEON/Sacheon(RKPS)  
RWY 06L/R, 24L/R  
SACHEON 5**

Note : Departures under U.S. TERPS.



**DEPARTURE PROCEDURE DESCRIPTION**

**ALL AIRCRAFT :** Departure climb rate 470 ft/NM to 5 000 ft.

**TAKE-OFF RWY 06L/R :** Climb HDG 064° or Climb on assigned HDG by ATC.....

**TAKE-OFF RWY 24L/R :** At least 35 ft AGL over DER, Climb HDG 244° or Climb on assigned HDG by ATC.....

.....Expect radar vector to intercept filed En-route fix or as assigned route by ATC.  
Maintain 5 400 ft or assigned altitude(flight level).  
Expect filed altitude/flight level 10 minutes after departure.

**LOST COMMUNICATIONS :** If radio contact is not established with departure control prior to reaching 5 000 ft, continue climb to 8 400 ft before turning to filed fix/Navaid and proceed filed route and altitude.

Change : Information of MAG VAR(7° W → 8° W) and heading(063° → 064°, 243° → 244°).

**INTENTIONALLY**

**LEFT**

**BLANK**

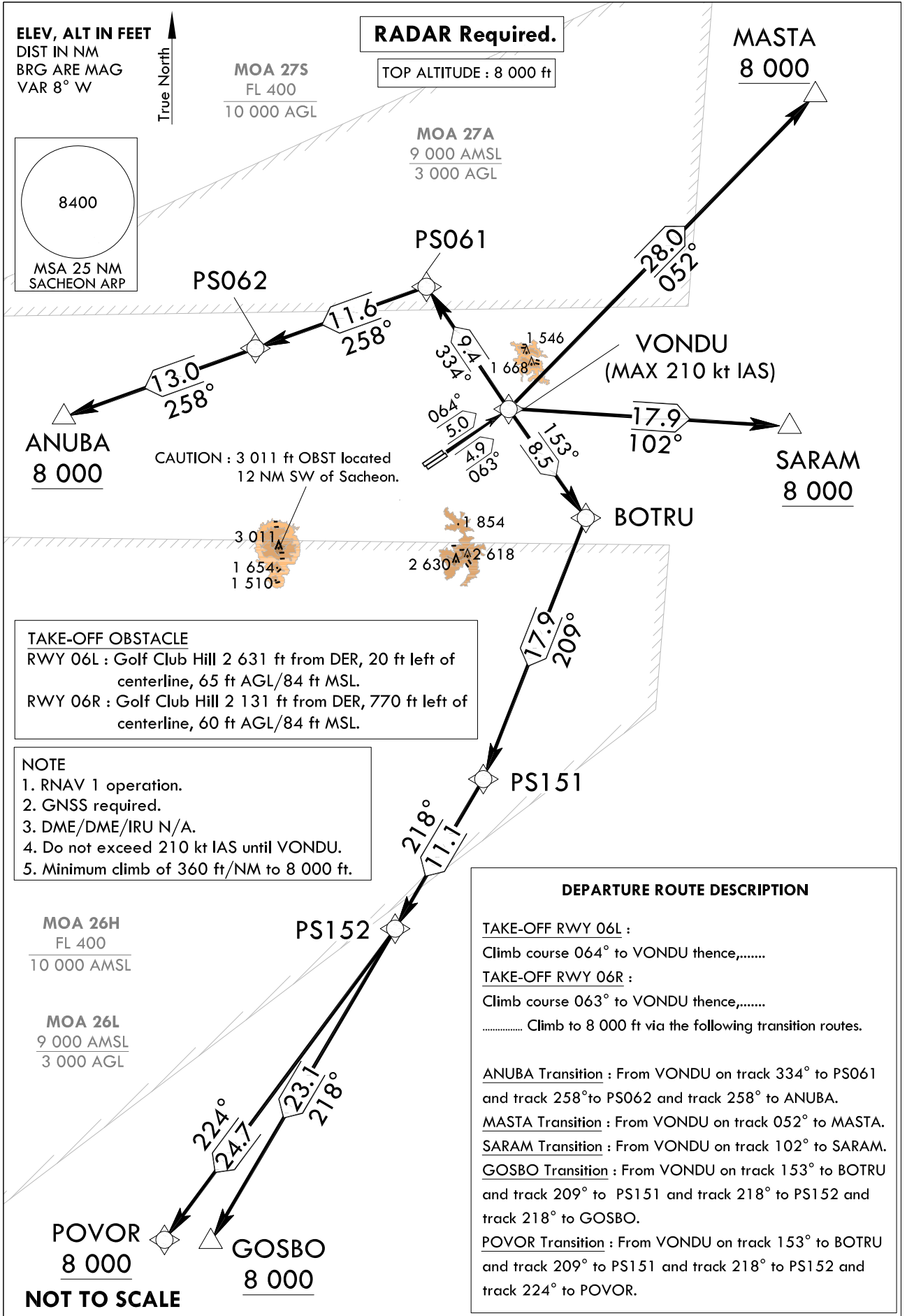
**STANDARD DEPARTURE  
CHART INSTRUMENT(SID)**

TRANSITION ALT 14 000  
TRANSITION LVL FL 140

SACHEON DEP 135.4  
347.3  
SACHEON TWR 118.675  
236.6

**SACHEON/Sacheon(RKPS)  
RWY 06L/R  
RNAV VONDU 1**

Note : Departures under U.S. TERPS.



Change : Establishment of ALT restrictions for ANUBA, MASTA, SARAM, GOSBO and POVOR.

AERONAUTICAL DATA TABULATION

Standard Instrument Departure Procedure Coding Tables

RNAV VONDU 1 - ANUBA Transition

Serial Number	Path Descriptor	Waypoint Identifier	Fly-over	Course/Track °M(°T)	Distance (NM)	Turn direction	Altitude (ft)	Speed (kt)	Coordinates	VPA/RDH	Navigation specification	Remarks
001	CF	VONDU	-	06L-064 (055.6) 06R-063 (054.2)	06L-5.0 06R-4.9	-	-	-210	35°08'36.0"N 128°09'56.1"E	-	RNAV 1	-
002	TF	PS061	-	334 (325.6)	9.4	-	-	-	35°16'22.2"N 128°03'27.3"E	-	RNAV 1	-
003	TF	PS062	-	258 (249.7)	11.6	-	-	-	35°12'19.4"N 127°50'11.6"E	-	RNAV 1	-
004	TF	ANUBA	-	258 (249.5)	13.0	-	+8 000	-	35°07'45.9"N 127°35'22.8"E	-	RNAV 1	-

RNAV VONDU 1 - MASTA Transition

Serial Number	Path Descriptor	Waypoint Identifier	Fly-over	Course/Track °M(°T)	Distance (NM)	Turn direction	Altitude (ft)	Speed (kt)	Coordinates	VPA/RDH	Navigation specification	Remarks
001	CF	VONDU	-	06L-064 (055.6) 06R-063 (054.2)	06L-5.0 06R-4.9	-	-	-210	35°08'36.0"N 128°09'56.1"E	-	RNAV 1	-
002	TF	MASTA	-	052 (043.8)	28	-	+8 000	-	35°28'47.0"N 128°33'39.6"E	-	RNAV 1	-

RNAV VONDU 1 - SARAM Transition

Serial Number	Path Descriptor	Waypoint Identifier	Fly-over	Course/Track °M(°T)	Distance (NM)	Turn direction	Altitude (ft)	Speed (kt)	Coordinates	VPA/RDH	Navigation specification	Remarks
001	CF	VONDU	-	06L-064 (055.6) 06R-063 (054.2)	06L-5.0 06R-4.9	-	-	-210	35°08'36.0"N 128°09'56.1"E	-	RNAV 1	-
002	TF	SARAM	-	102 (093.1)	17.9	-	+8 000	-	35°07'36.3"N 128°31'46.7"E	-	RNAV 1	-

AERONAUTICAL DATA TABULATION

Standard Instrument Departure Procedure Coding Tables

RNAV VONDU 1 - GOSBO Transition

Serial Number	Path Descriptor	Waypoint Identifier	Fly-over	Course/Track °M(°T)	Distance (NM)	Turn direction	Altitude (ft)	Speed (kt)	Coordinates	VPA/ RDH	Navigation specification	Remarks
001	CF	VONDU	-	06L-064 (035.6) 06R-063 (034.2)	06L-5.0 06R-4.9	-	-	-210	35°08'36.0"N 128°09'56.1"E	-	RNAV 1	-
002	TF	BOTRU	-	153 (144.2)	8.5	-	-	-	35°01'41.4"N 128°15'59.4"E	-	RNAV 1	-
003	TF	PS151	-	209 (201.0)	17.9	-	-	-	34°44'58.0"N 128°08'12.5"E	-	RNAV 1	-
004	TF	PS152	-	218 (210.0)	11.1	-	-	-	34°35'21.8"N 128°01'30.1"E	-	RNAV 1	-
005	TF	GOSBO	-	218 (209.9)	23.1	-	+8 000	-	34°15'16.8"N 127°47'34.4"E	-	RNAV 1	-

RNAV VONDU 1 - POVOR Transition

Serial Number	Path Descriptor	Waypoint Identifier	Fly-over	Course/Track °M(°T)	Distance (NM)	Turn direction	Altitude (ft)	Speed (kt)	Coordinates	VPA/ RDH	Navigation specification	Remarks
001	CF	VONDU	-	06L-064 (035.6) 06R-063 (034.2)	06L-5.0 06R-4.9	-	-	-210	35°08'36.0"N 128°09'56.1"E	-	RNAV 1	-
002	TF	BOTRU	-	153 (144.2)	8.5	-	-	-	35°01'41.4"N 128°15'59.4"E	-	RNAV 1	-
003	TF	PS151	-	209 (201.0)	17.9	-	-	-	34°44'58.0"N 128°08'12.5"E	-	RNAV 1	-
004	TF	PS152	-	218 (210.0)	11.1	-	-	-	34°35'21.8"N 128°01'30.1"E	-	RNAV 1	-
005	TF	POVOR	-	224 (216.0)	24.7	-	+8 000	-	34°15'20.0"N 127°44'00.0"E	-	RNAV 1	-

Change : New procedure.

**INTENTIONALLY**

**LEFT**

**BLANK**

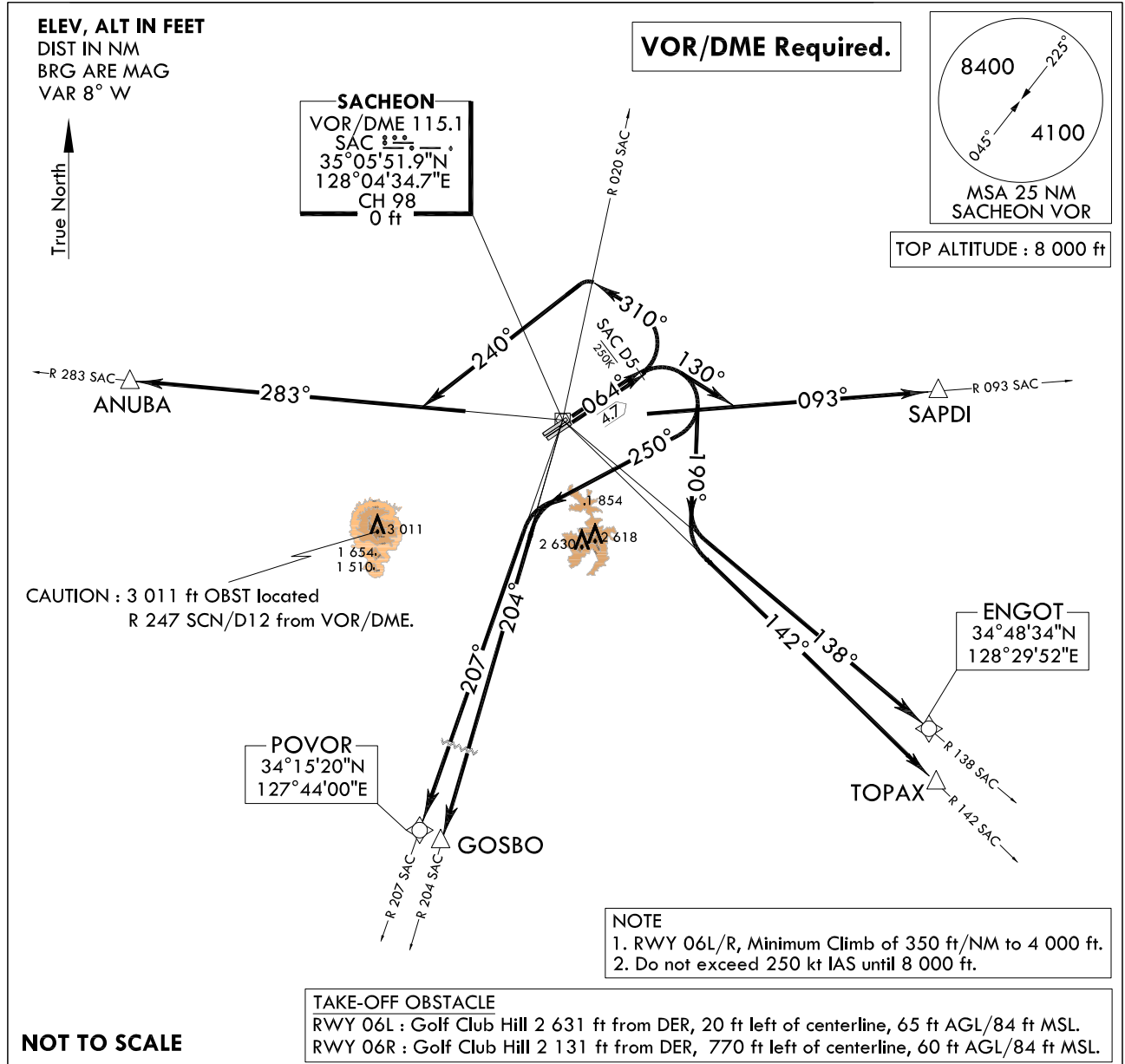
**STANDARD DEPARTURE  
CHART - INSTRUMENT(SID)**

TRANSITION ALT 14 000  
TRANSITION LVL FL 140

SACHEON DEP 135.4  
347.3  
SACHEON TWR 118.675  
236.6

**SACHEON/Sacheon(RKPS)  
RWY 06L/R  
SACHEON 1**

Note : Departures under U.S. TERPS.



**DEPARTURE ROUTE DESCRIPTION**

TAKE-OFF RWY 06L/R : Climb HDG 064° to SAC D5 thence,.....  
..... Climb to 8 000 ft via the following transition routes.

ANUBA Transition : Left turn HDG 310° to cross R 020 SAC and left turn HDG 240°  
to R 283 SAC and R 283 SAC to ANUBA.

SAPDI Transition : Right turn HDG 130° to intercept R 093 SAC and R 093 SAC to SAPDI.

TOPAX Transition : Right turn HDG 190° to intercept R 142 SAC and R 142 SAC to TOPAX.

GOSBO Transition : Right turn HDG 250° to intercept R 204 SAC and R 204 SAC to GOSBO.

ENGOT Transition : Right turn HDG 190° to intercept R 138 SAC and R 138 SAC to ENGOT.

POVOR Transition : Right turn HDG 250° to intercept R 207 SAC and R 207 SAC to POVOR.

**INTENTIONALLY**

**LEFT**

**BLANK**



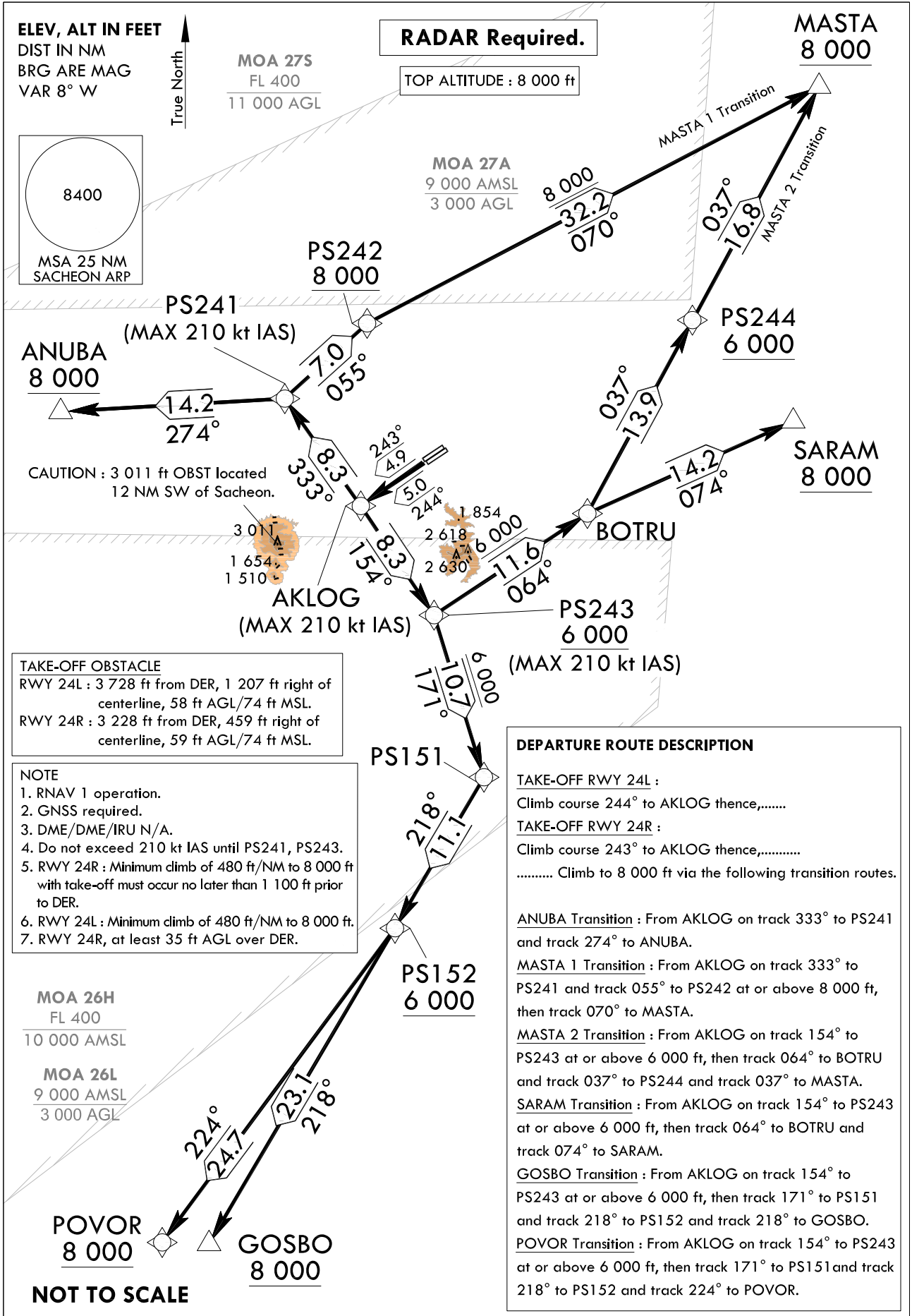
**STANDARD DEPARTURE  
CHART INSTRUMENT(SID)**

TRANSITION ALT 14 000  
TRANSITION LVL FL 140

SACHEON DEP 135.4  
347.3  
SACHEON TWR 118.675  
236.6

**SACHEON/Sacheon(RKPS)  
RWY 24L/R  
RNAV AKLOG 1**

Note : Departures under U.S. TERPS.



Change : Establishment of ALT restrictions for ANUBA, MASTA, SARAM, GOSBO, POVOR, PS244 and PS152.

AERONAUTICAL DATA TABULATION

Standard Instrument Departure Procedure Coding Tables

RNAV AKLOG 1 - ANUBA Transition

Serial Number	Path Descriptor	Waypoint Identifier	Fly-over	Course/Track °M(°T)	Distance (NM)	Turn direction	Altitude (ft)	Speed (kt)	Coordinates	VPA/RDH	Navigation specification	Remarks
001	CF	AKLOG	-	24L-244 (235.6) 24R-243 (234.2)	24L-5.0 24R-4.9	-	-	- 210	35°02'02.7"N 127°58'33.4"E	-	RNAV 1	-
002	TF	PS241	-	333 (324.1)	8.3	-	-	- 210	35°08'46.7"N 127°52'37.2"E	-	RNAV 1	-
003	TF	ANUBA	-	274 (266.0)	14.2	-	+8 000	-	35°07'45.9"N 127°35'22.8"E	-	RNAV 1	-

RNAV AKLOG 1 - MASTA 1 Transition

Serial Number	Path Descriptor	Waypoint Identifier	Fly-over	Course/Track °M(°T)	Distance (NM)	Turn direction	Altitude (ft)	Speed (kt)	Coordinates	VPA/RDH	Navigation specification	Remarks
001	CF	AKLOG	-	24L-244 (235.6) 24R-243 (234.2)	24L-5.0 24R-4.9	-	-	- 210	35°02'02.7"N 127°58'33.4"E	-	RNAV 1	-
002	TF	PS241	-	333 (324.1)	8.3	-	-	- 210	35°08'46.7"N 127°52'37.2"E	-	RNAV 1	-
003	TF	PS242	-	055 (047.0)	7.0	-	+8 000	-	35°13'34.8"N 127°58'53.5"E	-	RNAV 1	-
004	TF	MASTA	-	070 (061.7)	32.2	-	+8 000	-	35°28'47.0"N 128°33'39.6"E	-	RNAV 1	-

RNAV AKLOG 1 - MASTA 2 Transition

Serial Number	Path Descriptor	Waypoint Identifier	Fly-over	Course/Track °M(°T)	Distance (NM)	Turn direction	Altitude (ft)	Speed (kt)	Coordinates	VPA/RDH	Navigation specification	Remarks
001	CF	AKLOG	-	24L-244 (235.6) 24R-243 (234.2)	24L-5.0 24R-4.9	-	-	- 210	35°02'02.7"N 127°58'33.4"E	-	RNAV 1	-
002	TF	PS243	-	154 (145.5)	8.3	-	+6 000	- 210	34°55'11.1"N 128°04'16.1"E	-	RNAV 1	-
003	TF	BOTRU	-	064 (056.0)	11.6	-	+6 000	-	35°01'41.4"N 128°15'59.4"E	-	RNAV 1	-
004	TF	PS244	-	037 (028.1)	13.9	-	+6 000	-	35°13'58.0"N 128°23'58.2"E	-	RNAV 1	-
005	TF	MASTA	-	037 (028.1)	16.8	-	+8 000	-	35°28'47.0"N 128°33'39.6"E	-	RNAV 1	-

SACHEON/Sacheon(RKPS)  
RWY 24L/R  
RNAV AKLOG 1

AERONAUTICAL DATA TABULATION

Standard Instrument Departure Procedure Coding Tables

RNAV AKLOG 1 - SARAM Transition

Serial Number	Path Descriptor	Waypoint Identifier	Fly-over	Course/Track °M(°T)	Distance (NM)	Turn direction	Altitude (ft)	Speed (kt)	Coordinates	VPA/RDH	Navigation specification	Remarks
001	CF	AKLOG	-	24L-244 (235.6) 24R-243 (234.2)	24L-5.0 24R-4.9	-	-	- 210	35°02'02.7"N 127°58'33.4"E	-	RNAV 1	-
002	TF	PS243	-	154 (145.5)	8.3	-	+6 000	- 210	34°55'11.1"N 128°04'16.1"E	-	RNAV 1	-
003	TF	BOTRU	-	064 (056.0)	11.6	-	+6 000	-	35°01'41.4"N 128°15'59.4"E	-	RNAV 1	-
004	TF	SARAM	-	074 (065.4)	14.2	-	+8 000	-	35°07'36.3"N 128°31'46.7"E	-	RNAV 1	-

RNAV AKLOG 1 - GOSBO Transition

Serial Number	Path Descriptor	Waypoint Identifier	Fly-over	Course/Track °M(°T)	Distance (NM)	Turn direction	Altitude (ft)	Speed (kt)	Coordinates	VPA/RDH	Navigation specification	Remarks
001	CF	AKLOG	-	24L-244 (235.6) 24R-243 (234.2)	24L-5.0 24R-4.9	-	-	- 210	35°02'02.7"N 127°58'33.4"E	-	RNAV 1	-
002	TF	PS243	-	154 (145.5)	8.3	-	+6 000	- 210	34°55'11.1"N 128°04'16.1"E	-	RNAV 1	-
003	TF	PS151	-	171 (162.3)	10.7	-	+6 000	-	34°44'58.0"N 128°08'12.5"E	-	RNAV 1	-
004	TF	PS152	-	218 (210.0)	11.1	-	+6 000	-	34°35'21.8"N 128°01'30.1"E	-	RNAV 1	-
005	TF	GOSBO	-	218 (209.9)	23.1	-	+8 000	-	34°15'16.8"N 127°47'34.4"E	-	RNAV 1	-

RNAV AKLOG 1 - POVOR Transition

Serial Number	Path Descriptor	Waypoint Identifier	Fly-over	Course/Track °M(°T)	Distance (NM)	Turn direction	Altitude (ft)	Speed (kt)	Coordinates	VPA/RDH	Navigation specification	Remarks
001	CF	AKLOG	-	24L-244 (235.6) 24R-243 (234.2)	24L-5.0 24R-4.9	-	-	- 210	35°02'02.7"N 127°58'33.4"E	-	RNAV 1	-
002	TF	PS243	-	154 (145.5)	8.3	-	+6 000	- 210	34°55'11.1"N 128°04'16.1"E	-	RNAV 1	-
003	TF	PS151	-	171 (162.3)	10.7	-	+6 000	-	34°44'58.0"N 128°08'12.5"E	-	RNAV 1	-
004	TF	PS152	-	218 (210.0)	11.1	-	+6 000	-	34°35'21.8"N 128°01'30.1"E	-	RNAV 1	-
005	TF	POVOR	-	224 (216.0)	24.7	-	+8 000	-	34°15'20.0"N 127°44'00.0"E	-	RNAV 1	-

Change : New procedure.

**INTENTIONALLY**

**LEFT**

**BLANK**

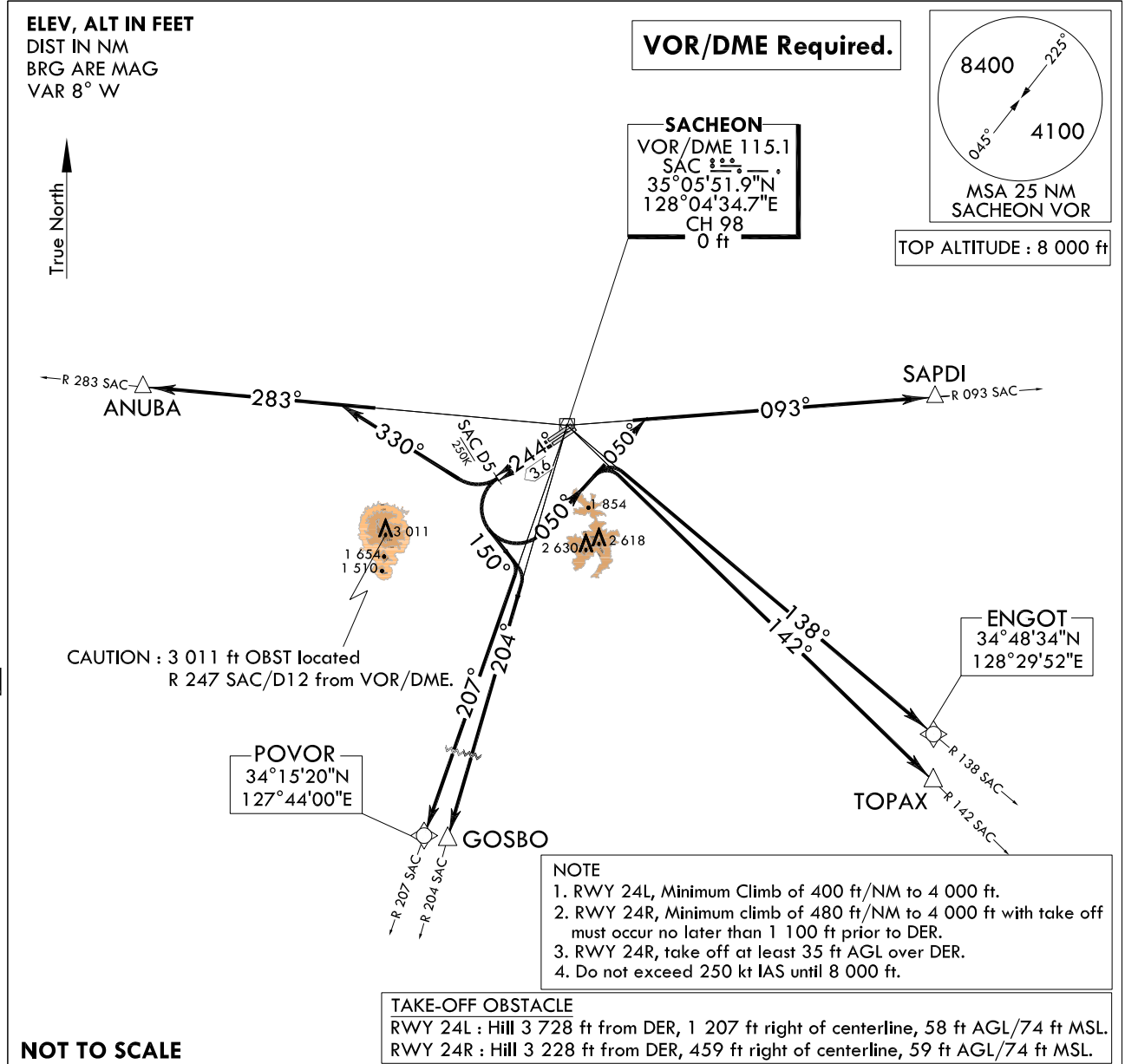
**STANDARD DEPARTURE  
CHART - INSTRUMENT(SID)**

TRANSITION ALT 14 000  
TRANSITION LVL FL 140

SACHEON DEP 135.4  
347.3  
SACHEON TWR 118.675  
236.6

**SACHEON/Sacheon(RKPS)  
RWY 24L/R  
SACHEON 2**

Note : Departures under U.S. TERPS.



**DEPARTURE ROUTE DESCRIPTION**

TAKE-OFF RWY 24L/R : Climb HDG 244° to SAC D5 thence,.....  
..... Climb to 8 000 ft via the following transition routes.

- ANUBA Transition : Right turn HDG 330° to intercept R 283 SAC and R 283 SAC to ANUBA.
- GOSBO Transition : Left turn HDG 150° to intercept R 204 SAC and R 204 SAC to GOSBO.
- TOPAX Transition : Left turn HDG 050° to intercept R 142 SAC and R 142 SAC to TOPAX.
- SAPDI Transition : Left turn HDG 050° to intercept R 093 SAC and R 093 SAC to SAPDI.
- ENGOT Transition : Left turn HDG 050° to intercept R 138 SAC and R 138 SAC to ENGOT.
- POVOR Transition : Left turn HDG 150° to intercept R 207 SAC and R 207 SAC to POVOR.

Change : Information of OBST caution.

**INTENTIONALLY**

**LEFT**

**BLANK**